

HIGHLIGHTS OF PRESCRIBING INFORMATION

These highlights do not include all information needed to use COPIKTRA safely and effectively. See full prescribing information for COPIKTRA.

COPIKTRA® (duvelisib), capsules for oral use
Initial U.S. Approval: 2018

WARNING: TREATMENT-RELATED MORTALITY AND SERIOUS TOXICITIES: INFECTIONS, DIARRHEA OR COLITIS, CUTANEOUS REACTIONS, and PNEUMONITIS

See full prescribing information for complete boxed warning

- Treatment-related mortality occurred in 15% of COPIKTRA-treated patients. (5.1)
- Fatal and/or serious infections occurred in 31% of COPIKTRA-treated patients. Monitor for signs and symptoms of infection. Withhold COPIKTRA if infection is suspected. (5.2)
- Fatal and/or serious diarrhea or colitis occurred in 18% of COPIKTRA-treated patients. Monitor for the development of severe diarrhea or colitis. Withhold COPIKTRA. (5.3)
- Fatal and/or serious cutaneous reactions occurred in 5% of COPIKTRA-treated patients. Withhold COPIKTRA. (5.4)
- Fatal and/or serious pneumonitis occurred in 5% of COPIKTRA-treated patients. Monitor for pulmonary symptoms and interstitial infiltrates. Withhold COPIKTRA. (5.5)

RECENT MAJOR CHANGES

Boxed Warning, Treatment Related Mortality added	7/2024
Indications and Usage, Limitations of Use added (1)	7/2024
Warnings and Precautions, Treatment Related Mortality (5.1)	7/2024

INDICATIONS AND USAGE

COPIKTRA is a kinase inhibitor indicated for the treatment of adult patients with relapsed or refractory chronic lymphocytic leukemia (CLL) or small lymphocytic lymphoma (SLL) after at least two prior lines of systemic therapy. (1)

Limitations of Use: COPIKTRA is not indicated or recommended for the treatment of any patients with CLL or SLL as initial or second line treatment due to an increased risk of treatment-related mortality. (1)

----- **DOSAGE AND ADMINISTRATION** -----
25 mg orally, twice daily. Modify dosage for toxicity. (2.1, 2.2)

----- **DOSAGE FORMS AND STRENGTHS** -----
Capsules: 25 mg, 15 mg. (3)

----- **CONTRAINDICATIONS** -----
None. (4)

----- **WARNINGS AND PRECAUTIONS** -----
• Hepatotoxicity: Monitor hepatic function. (5.6)
• Neutropenia: Monitor blood counts. (5.7)
• Embryo-Fetal toxicity: COPIKTRA can cause fetal harm. Advise females of reproductive potential and males with female partners of reproductive potential of potential risk to a fetus and to use effective contraception. (5.8)

----- **ADVERSE REACTIONS** -----
The most common adverse reactions ($\geq 20\%$) are diarrhea or colitis, neutropenia, rash, fatigue, pyrexia, cough, nausea, upper respiratory infection, pneumonia, musculoskeletal pain, and anemia. (6)

To report SUSPECTED ADVERSE REACTIONS, contact Secura Bio, Inc. (Secura Bio) at 1-844-973-2872, or U.S. Food and Drug Administration (FDA) at 1-800-FDA-1088 or www.fda.gov/medwatch.

----- **DRUG INTERACTIONS** -----
• CYP3A4 inhibitors: Reduce COPIKTRA dose to 15 mg twice daily when co-administered with strong CYP3A4 inhibitors. (2.4, 7.1, 12.3)
• Strong CYP3A4 inducers: Avoid coadministration. (2.5, 7.1, 12.3)
• Moderate CYP3A4 inducers: Avoid coadministration. If coadministration cannot be avoided, increase the dose of COPIKTRA. (2.5, 7.1, 12.3)
• CYP3A4 substrates: Monitor for signs of toxicities when co-administering COPIKTRA with sensitive CYP3A substrates. (7.2)

----- **USE IN SPECIFIC POPULATIONS** -----
Lactation: Advise women not to breastfeed. (8.2)

See 17 for PATIENT COUNSELING INFORMATION and Medication Guide.

Revised: 9/2025

FULL PRESCRIBING INFORMATION: CONTENTS*

WARNING: TREATMENT-RELATED MORTALITY AND SERIOUS TOXICITIES: INFECTIONS, DIARRHEA OR COLITIS, CUTANEOUS REACTIONS, AND PNEUMONITIS

1 INDICATIONS AND USAGE

2 DOSAGE AND ADMINISTRATION

- 2.1 Recommended Dosage
- 2.2 Recommended Prophylaxis
- 2.3 Dosage Modifications for Adverse Reactions
- 2.4 Dosage Modification for Concomitant Use with CYP3A4 Inhibitors
- 2.5 Dosage Modifications for Concomitant Use with CYP3A4 Inducers

3 DOSAGE FORMS AND STRENGTHS

4 CONTRAINDICATIONS

5 WARNINGS AND PRECAUTIONS

- 5.1 Treatment Related Mortality
- 5.2 Infections
- 5.3 Diarrhea or Colitis
- 5.4 Cutaneous Reactions
- 5.5 Pneumonitis
- 5.6 Hepatotoxicity
- 5.7 Neutropenia
- 5.8 Embryo-fetal Toxicity

6 ADVERSE REACTIONS

- 6.1 Clinical Trial Experience

7 DRUG INTERACTIONS

- 7.1 Effects of Other Drugs on COPIKTRA
- 7.2 Effects of COPIKTRA on Other Drugs

8 USE IN SPECIFIC POPULATIONS

- 8.1 Pregnancy
- 8.2 Lactation
- 8.3 Females and Males of Reproductive Potential
- 8.4 Pediatric Use
- 8.5 Geriatric Use

11 DESCRIPTION

12 CLINICAL PHARMACOLOGY

- 12.1 Mechanism of Action
- 12.2 Pharmacodynamics
- 12.3 Pharmacokinetics

13 NONCLINICAL TOXICOLOGY

- 13.1 Carcinogenesis, Mutagenesis, Impairment of Fertility

14 CLINICAL STUDIES

16 HOW SUPPLIED/STORAGE AND HANDLING

17 PATIENT COUNSELING INFORMATION

*Sections or subsections omitted from the full prescribing information are not listed.

FULL PRESCRIBING INFORMATION

WARNING: TREATMENT-RELATED MORTALITY AND SERIOUS TOXICITIES: INFECTIONS, DIARRHEA OR COLITIS, CUTANEOUS REACTIONS, and PNEUMONITIS

- Treatment-related mortality occurred in 15% of COPIKTRA-treated patients [see *Warnings and Precautions (5.1)*].
- Fatal and/or serious infections occurred in 31% of COPIKTRA-treated patients. Monitor for signs and symptoms of infection. Withhold COPIKTRA if infection is suspected [see *Warnings and Precautions (5.2)*].
- Fatal and/or serious diarrhea or colitis occurred in 18% of COPIKTRA-treated patients. Monitor for the development of severe diarrhea or colitis. Withhold COPIKTRA [see *Warnings and Precautions (5.3)*].
- Fatal and/or serious cutaneous reactions occurred in 5% of COPIKTRA-treated patients. Withhold COPIKTRA [see *Warnings and Precautions (5.4)*].
- Fatal and/or serious pneumonitis occurred in 5% of COPIKTRA-treated patients. Monitor for pulmonary symptoms and interstitial infiltrates. Withhold COPIKTRA [see *Warnings and Precautions (5.5)*].

1 INDICATIONS AND USAGE

COPIKTRA is indicated for the treatment of adult patients with relapsed or refractory chronic lymphocytic leukemia (CLL) or small lymphocytic lymphoma (SLL) after at least two prior lines of systemic therapy.

Limitations of Use: COPIKTRA is not indicated or recommended for the treatment of any patients with CLL or SLL as initial or second line treatment due to an increased risk of treatment-related mortality.

2 DOSAGE AND ADMINISTRATION

2.1 Recommended Dosage

The recommended dose of COPIKTRA is 25 mg administered as oral capsules twice daily (BID) with or without food. A cycle consists of 28 days. The capsules should be swallowed whole. Advise patients not to open, break, or chew the capsules.

Advise patients that if a dose is missed by fewer than 6 hours, to take the missed dose right away and take the next dose as usual. If a dose is missed by more than 6 hours, advise patients to wait and take the next dose at the usual time.

2.2 Recommended Prophylaxis

Provide prophylaxis for *Pneumocystis jirovecii* (PJP) during treatment with COPIKTRA. Following completion of COPIKTRA treatment, continue PJP prophylaxis until the absolute CD4+ T cell count is greater than 200 cells/ μ L.

Withhold COPIKTRA in patients with suspected PJP of any grade, and discontinue if PJP is confirmed.

Consider prophylactic antivirals during COPIKTRA treatment to prevent cytomegalovirus (CMV) infection including CMV reactivation.

2.3 Dosage Modifications for Adverse Reactions

Manage toxicities per [Table 1](#) with dose reduction, treatment hold, or discontinuation of COPIKTRA.

Table 1. COPIKTRA Dose Modifications and Toxicity Management

Toxicity	Adverse Reaction Grade	Recommended Management
Nonhematologic Adverse Reactions		
Infections	Grade 3 or higher infection	<ul style="list-style-type: none"> Withhold COPIKTRA until resolved Resume at the same or reduced dose (see Table 2)
	Clinical CMV infection or viremia (positive PCR or antigen test)	<ul style="list-style-type: none"> Withhold COPIKTRA until resolved Resume at the same or reduced dose (see Table 2) If COPIKTRA is resumed, monitor patients for CMV reactivation (by PCR or antigen test) at least monthly
	PJP	<ul style="list-style-type: none"> For suspected PJP, withhold COPIKTRA until evaluated For confirmed PJP, discontinue COPIKTRA
Non-infectious Diarrhea or colitis	Mild/moderate diarrhea (Grade 1-2, up to 6 stools per day over baseline) and responsive to antidiarrheal agents, OR Asymptomatic (Grade 1) colitis	<ul style="list-style-type: none"> No change in dose Initiate supportive therapy with antidiarrheal agents as appropriate Monitor at least weekly until resolved
	Mild/moderate diarrhea (Grade 1-2, up to 6 stools per day over baseline) and unresponsive to antidiarrheal agents	<ul style="list-style-type: none"> Withhold COPIKTRA until resolved Initiate supportive therapy with enteric acting steroids (e.g., budesonide) Monitor at least weekly until resolved Resume at a reduced dose (see Table 2)

Toxicity	Adverse Reaction Grade	Recommended Management
	Abdominal pain, stool with mucus or blood, change in bowel habits, peritoneal signs, OR Severe diarrhea (Grade 3, >6 stools per day over baseline)	<ul style="list-style-type: none"> • Withhold COPIKTRA until resolved • Initiate supportive therapy with enteric acting steroids (e.g., budesonide) or systemic steroids • Monitor at least weekly until resolved • Resume at a reduced dose (see Table 2) • For recurrent Grade 3 diarrhea or recurrent colitis of any grade, discontinue COPIKTRA
	Life-threatening	<ul style="list-style-type: none"> • Discontinue COPIKTRA
Cutaneous reactions	Grade 1-2	<ul style="list-style-type: none"> • No change in dose • Initiate supportive care with emollients, antihistamines (for pruritus), or topical steroids • Monitor closely
	Grade 3	<ul style="list-style-type: none"> • Withhold COPIKTRA until resolved • Initiate supportive care with emollients, antihistamines (for pruritus), or topical steroids • Monitor at least weekly until resolved • Resume at reduced dose (see Table 2) • If severe cutaneous reaction does not improve, worsens, or recurs, discontinue COPIKTRA
	Life-threatening	<ul style="list-style-type: none"> • Discontinue COPIKTRA
	SJS, TEN, DRESS (any grade)	<ul style="list-style-type: none"> • Discontinue COPIKTRA
Pneumonitis without suspected infectious cause	Moderate (Grade 2) symptomatic pneumonitis	<ul style="list-style-type: none"> • Withhold COPIKTRA • Treat with systemic steroid therapy • If pneumonitis recovers to Grade 0 or 1, COPIKTRA may be resumed at reduced dose (see Table 2) • If non-infectious pneumonitis recurs or patient does not respond to steroid therapy, discontinue COPIKTRA
	Severe (Grade 3) or life-threatening pneumonitis	<ul style="list-style-type: none"> • Discontinue COPIKTRA • Treat with systemic steroid therapy
ALT/AST elevation	3 to 5 × upper limit of normal (ULN) (Grade 2)	<ul style="list-style-type: none"> • Maintain COPIKTRA dose • Monitor at least weekly until return to < 3 × ULN
	> 5 to 20 × ULN (Grade 3)	<ul style="list-style-type: none"> • Withhold COPIKTRA and monitor at least weekly until return to < 3 × ULN • Resume COPIKTRA at same dose (first occurrence) or at a reduced dose for subsequent occurrence (see Table 2)
	> 20 × ULN (Grade 4)	<ul style="list-style-type: none"> • Discontinue COPIKTRA
Hematologic Adverse Reactions		

Toxicity	Adverse Reaction Grade	Recommended Management
Neutropenia	Absolute neutrophil count (ANC) 0.5 to 1.0 Gi/L	<ul style="list-style-type: none"> Maintain COPIKTRA dose Monitor ANC at least weekly
	ANC less than 0.5 Gi/L	<ul style="list-style-type: none"> Withhold COPIKTRA. Monitor ANC until > 0.5 Gi/L Resume COPIKTRA at same dose (first occurrence) or at a reduced dose for subsequent occurrence (see Table 2)
Thrombocytopenia	Platelet count 25 to < 50 Gi/L (Grade 3) with Grade 1 bleeding	<ul style="list-style-type: none"> No change in dose Monitor platelet counts at least weekly
	Platelet count 25 to < 50 Gi/L (Grade 3) with Grade 2 bleeding or Platelet count < 25 Gi/L (Grade 4)	<ul style="list-style-type: none"> Withhold COPIKTRA Monitor platelet counts until ≥ 25 Gi/L and resolution of bleeding (if applicable) Resume COPIKTRA at same dose (first occurrence) or resume at a reduced dose for subsequent occurrence (see Table 2)

Abbreviations: ALT = alanine aminotransferase; ANC = absolute neutrophil count; AST = aspartate aminotransferase; CMV = cytomegalovirus; DRESS = drug reaction with eosinophilia and systemic systems; PCR = polymerase chain reaction; PJP = *Pneumocystis jirovecii*; pneumonia; SJS = Stevens-Johnson syndrome; TEN = toxic epidermal necrolysis; ULN = upper limit of normal

Recommended dose modification levels for COPIKTRA are presented in [Table 2](#).

Table 2. Dose Modification Levels

Dose Level	Dose
Initial Dose	25 mg twice daily
Dose Reduction	15 mg twice daily
Subsequent Dose Modification	Discontinue COPIKTRA if patient is unable to tolerate 15 mg twice daily.

2.4 Dosage Modification for Concomitant Use with CYP3A4 Inhibitors

Reduce COPIKTRA dose to 15 mg twice daily when coadministered with strong CYP3A4 inhibitors (e.g., ketoconazole) [*see Drug Interactions (7.1)*].

2.5 Dosage Modification for Concomitant Use with CYP3A4 Inducers

Avoid coadministration of COPIKTRA with strong CYP3A4 inducers.

Avoid coadministration of COPIKTRA with moderate CYP3A4 inducers. If coadministration with a moderate CYP3A4 inducer cannot be avoided, increase the COPIKTRA dose on Day 12 of coadministration with the moderate CYP3A4 inducer as recommended in Table 3.

Table 3. Recommended Dosage Modifications for Use with Moderate CYP3A4 Inducers

Initial COPIKTRA Dosage	Recommended COPIKTRA Dosage
25 mg orally twice daily	40 mg orally twice daily
15 mg orally twice daily	25 mg orally twice daily

After the inducer has been discontinued for at least 14 days, resume COPIKTRA at the dose taken prior to initiating the moderate CYP3A4 inducer [see *Drug Interactions (7.1)*, *Clinical Pharmacology (12.3)*]

3 DOSAGE FORMS AND STRENGTHS

Strength	Description
25 mg	White to off-white opaque and Swedish orange opaque capsule printed in black ink with “duv 25 mg”
15 mg	Pink opaque capsule printed in black ink with “duv 15 mg”

4 CONTRAINDICATIONS

None.

5 WARNINGS AND PRECAUTIONS

5.1 Treatment-related Mortality

In a randomized controlled study in patients with relapsed or refractory CLL or SLL, treatment with COPIKTRA caused increased treatment-related mortality [see *Clinical Studies (14)*]. With extended follow-up with a median of 63 months, treatment-related deaths occurred in 15% (23/158) of those patients in the overall population. In the indicated patient population, patients with relapsed or refractory CLL or SLL after at least two prior lines of systemic therapy, treatment-related deaths following treatment with COPIKTRA occurred in 14% (13/93) of patients. The most common cause of the treatment-related deaths were infections, which occurred in 9% and 11% of patients with relapsed or refractory CLL following at least one or two prior systemic therapies, respectively [see *Adverse Reactions (6.1)*]. COPIKTRA is not indicated and is not recommended for any patients in the initial or second-line treatment setting [see *Indications and Usage (1)*].

5.2 Infections

Serious, including fatal (18/442; 4%), infections occurred in 31% of patients receiving COPIKTRA 25 mg BID (N = 442). The most common serious infections were pneumonia, sepsis, and lower respiratory infections. Median time to onset of any grade infection was 3 months (range: 1 day to 32 months), with 75% of cases occurring within 6 months.

Treat infections prior to initiation of COPIKTRA. Advise patients to report any new or worsening signs and symptoms of infection. For grade 3 or higher infection, withhold COPIKTRA until infection has resolved. Resume COPIKTRA at the same or reduced dose [*see Dosage and Administration (2.3)*].

Serious, including fatal, *Pneumocystis jirovecii* pneumonia (PJP) occurred in 1% of patients taking COPIKTRA. Provide prophylaxis for PJP during treatment with COPIKTRA. Following completion of COPIKTRA treatment, continue PJP prophylaxis until the absolute CD4+ T cell count is greater than 200 cells/ μ L. Withhold COPIKTRA in patients with suspected PJP of any grade, and permanently discontinue if PJP is confirmed.

CMV reactivation/infection occurred in 1% of patients taking COPIKTRA. Consider prophylactic antivirals during COPIKTRA treatment to prevent CMV infection including CMV reactivation. For clinical CMV infection or viremia, withhold COPIKTRA until infection or viremia resolves. If COPIKTRA is resumed, administer the same or reduced dose and monitor patients for CMV reactivation by PCR or antigen test at least monthly [*see Dosage and Administration (2.3)*].

5.3 Diarrhea or Colitis

Serious, including fatal (1/442; 0.2%), diarrhea or colitis occurred in 18% of patients receiving COPIKTRA 25 mg BID (N = 442). The median time to onset of any grade diarrhea or colitis was 4 months (range: 1 day to 33 months), with 75% of cases occurring by 8 months. The median event duration was 0.5 months (range: 1 day to 29 months; 75th percentile: 1 month).

Advise patients to report any new or worsening diarrhea. For non-infectious diarrhea or colitis, follow the guidelines below:

For patients presenting with mild or moderate diarrhea (Grade 1-2) (i.e., up to 6 stools per day over baseline) or asymptomatic (Grade 1) colitis, initiate supportive care with antidiarrheal agents as appropriate, continue COPIKTRA at the current dose, and monitor the patient at least weekly until the event resolves. If the diarrhea is unresponsive to antidiarrheal therapy, withhold COPIKTRA and initiate supportive therapy with enteric acting steroids (e.g., budesonide). Monitor the patient at least weekly. Upon resolution of the diarrhea, consider restarting COPIKTRA at a reduced dose.

For patients presenting with abdominal pain, stool with mucus or blood, change in bowel habits, peritoneal signs, or with severe diarrhea (Grade 3) (i.e., > 6 stools per day over baseline) withhold COPIKTRA and initiate supportive therapy with enteric acting steroids (e.g., budesonide) or systemic steroids. A diagnostic work-up to determine etiology, including colonoscopy, should be performed. Monitor at least weekly. Upon resolution of the diarrhea or colitis, restart COPIKTRA at a reduced dose. For recurrent Grade 3 diarrhea or recurrent colitis of any grade, discontinue COPIKTRA. Discontinue COPIKTRA for life-threatening diarrhea or colitis [*see Dosage and Administration (2.3)*].

5.4 Cutaneous Reactions

Serious, including fatal (2/442; 0.5%), cutaneous reactions occurred in 5% of patients receiving COPIKTRA 25 mg BID (N = 442). Fatal cases included drug reaction with eosinophilia and systemic symptoms (DRESS) and toxic epidermal necrolysis (TEN). Median time to onset of any grade cutaneous reaction was 3 months (range: 1 day to 29 months, 75th percentile: 6 months), with a median event duration of 1 month (range: 1 day to 37 months, 75th percentile: 2 months).

Presenting features for the serious events were primarily described as pruritic, erythematous, or maculo-papular. Less common presenting features include exanthem, desquamation, erythroderma, skin exfoliation, keratinocyte necrosis, and papular rash. Advise patients to report any new or worsening cutaneous reactions. Review all concomitant medications and discontinue any medications potentially contributing to the event. For patients presenting with mild or moderate (Grade 1-2) cutaneous reactions, continue COPIKTRA at the current dose, initiate supportive care with emollients, anti-histamines (for pruritus), or topical steroids, and monitor the patient closely. Withhold COPIKTRA for severe (Grade 3) cutaneous reaction until resolution. Initiate supportive care with steroids (topical or systemic) or anti-histamines (for pruritus). Monitor at least weekly until resolved. Upon resolution of the event, restart COPIKTRA at a reduced dose. Discontinue COPIKTRA if severe cutaneous reaction does not improve, worsens, or recurs. For life-threatening cutaneous reactions, discontinue COPIKTRA. In patients with SJS, TEN, or DRESS of any grade, discontinue COPIKTRA [see *Dosage and Administration (2.3)*].

5.5 Pneumonitis

Serious, including fatal (1/442; 0.2%), pneumonitis without an apparent infectious cause occurred in 5% of patients receiving COPIKTRA 25 mg BID (N = 442). Median time to onset of any grade pneumonitis was 4 months (range: 9 days to 27 months), with 75% of cases occurring within 9 months). The median event duration was 1 month, with 75% of cases resolving by 2 months.

Withhold COPIKTRA in patients who present with new or progressive pulmonary signs and symptoms such as cough, dyspnea, hypoxia, interstitial infiltrates on a radiologic exam, or a decline by more than 5% in oxygen saturation and evaluate for etiology. If the pneumonitis is infectious, patients may be restarted on COPIKTRA at the previous dose once the infection, pulmonary signs and symptoms resolve. For moderate non-infectious pneumonitis (Grade 2), treat with systemic corticosteroids, and resume COPIKTRA at a reduced dose upon resolution. If non-infectious pneumonitis recurs or does not respond to steroid therapy, discontinue COPIKTRA. For severe or life-threatening non-infectious pneumonitis, discontinue COPIKTRA and treat with systemic steroids [see *Dosage and Administration (2.3)*].

5.6 Hepatotoxicity

Grade 3 and 4 ALT and/or AST elevation developed in 8% and 2%, respectively, in patients receiving COPIKTRA 25 mg BID (N = 442). Two percent of patients had both an ALT or AST greater than 3 x ULN and total bilirubin greater than 2 x ULN. Median time to onset of any grade transaminase elevation was 2 months (range: 3 days to 26 months), with a median event duration of 1 month (range: 1 day to 16 months).

Monitor hepatic function during treatment with COPIKTRA. For Grade 2 ALT/AST elevation (greater than 3 to 5 × ULN), maintain COPIKTRA dose and monitor at least weekly until return to less than 3 × ULN. For Grade 3 ALT/AST elevation (greater than 5 to 20 × ULN), withhold

COPIKTRA and monitor at least weekly until return to less than $3 \times$ ULN. Resume COPIKTRA at the same dose (first occurrence) or at a reduced dose for subsequent occurrence. For grade 4 ALT/AST elevation (greater than $20 \times$ ULN) discontinue COPIKTRA [see *Dosage and Administration (2.3)*].

5.7 Neutropenia

Grade 3 or 4 neutropenia occurred in 42% of patients receiving COPIKTRA 25 mg BID (N = 442), with Grade 4 neutropenia occurring in 24% of all patients. The median time to onset of Grade \geq 3 neutropenia was 2 months (range: 3 days to 31 months), with 75% of cases occurring within 4 months.

Monitor neutrophil counts at least every 2 weeks for the first 2 months of COPIKTRA therapy, and at least weekly in patients with neutrophil counts < 1.0 Gi/L (Grade 3-4). Withhold COPIKTRA in patients presenting with neutrophil counts < 0.5 Gi/L (Grade 4). Monitor until ANC is > 0.5 Gi/L, resume COPIKTRA at same dose for the first occurrence or a reduced dose for subsequent occurrence [see *Dosage and Administration (2.3)*].

5.8 Embryo-Fetal Toxicity

Based on findings in animals and its mechanism of action, COPIKTRA can cause fetal harm when administered to a pregnant woman. In animal reproduction studies, administration of duvelisib to pregnant rats and rabbits during organogenesis caused adverse developmental outcomes including embryo-fetal mortality (resorptions, post-implantation loss, and decreased viable fetuses), alterations to growth (lower fetal weights) and structural abnormalities (malformations) at maternal doses approximately 10 times and 39 times the maximum recommended human dose (MRHD) of 25 mg BID in rats and rabbits, respectively. Advise pregnant women of the potential risk to a fetus. Advise females of reproductive potential and males with female partners of reproductive potential to use effective contraception during treatment and for 1 month after the last dose [see *Use in Specific Populations (8.1, 8.3)* and *Clinical Pharmacology (12.1, 12.3)*].

6 ADVERSE REACTIONS

The following adverse reactions have been associated with COPIKTRA in clinical trials and are discussed in greater detail in other sections of the prescribing information:

- Treatment-related Mortality [see *Warnings and Precautions (5.1)*]
- Infections [see *Warnings and Precautions (5.2)*]
- Diarrhea or Colitis [see *Warnings and Precautions (5.3)*]
- Cutaneous Reactions [see *Warnings and Precautions (5.4)*]
- Pneumonitis [see *Warnings and Precautions (5.5)*]
- Hepatotoxicity [see *Warnings and Precautions (5.6)*]
- Neutropenia [see *Warnings and Precautions (5.7)*]

6.1 Clinical Trial Experience

Because clinical trials are conducted under widely variable conditions, adverse reaction rates observed in clinical trials of a drug cannot be directly compared with rates in clinical trials of another drug and may not reflect the rates observed in practice.

Summary of Clinical Trial Experience in B-cell Malignancies

The data described below reflect exposure to COPIKTRA in two single-arm, open-label clinical trials, one open-label extension clinical trial, and one randomized, open-label, actively controlled clinical trial totaling 442 patients with previously treated hematologic malignancies primarily including CLL/SLL (69%) and FL (22%). Patients were treated with COPIKTRA 25 mg BID until unacceptable toxicity or progressive disease. The median duration of exposure was 9 months (range: 0.1 to 53 months), with 36% (160/442) of patients having at least 12 months of exposure.

For the 442 patients, the median age was 67 years (range: 30 to 90 years), 65% were male, 92% were White, and 93% had an Eastern Cooperative Oncology Group (ECOG) performance status of 0 to 1. Patients had a median of 2 prior therapies. The trials required hepatic transaminases at least ≤ 3 times upper limit of normal (ULN), total bilirubin ≤ 1.5 times ULN, and serum creatinine ≤ 1.5 times ULN. Patients were excluded for prior exposure to a PI3K inhibitor within 4 weeks.

Fatal adverse reactions within 30 days of the last dose occurred in 36 patients (8%) treated with COPIKTRA 25 mg BID.

Serious adverse reactions were reported in 289 patients (65%). The most frequent serious adverse reactions that occurred were infection (31%), diarrhea or colitis (18%), pneumonia (17%), rash (5%), and pneumonitis (5%).

Adverse reactions resulted in treatment discontinuation in 156 patients (35%), most often due to diarrhea or colitis, infection, and rash. COPIKTRA was dose reduced in 104 patients (24%) due to adverse reactions, most often due to diarrhea or colitis and transaminase elevation. The median time to first dose modification or discontinuation was 4 months (range: 0.1 to 27 months), with 75% of patients having their first dose modification or discontinuation within 7 months.

Common Adverse Reactions

Table 4 summarizes common adverse reactions in patients receiving COPIKTRA 25 mg BID, and Table 5 summarizes the treatment-emergent laboratory abnormalities. The most common adverse reactions (reported in $\geq 20\%$ of patients) were diarrhea or colitis, neutropenia, rash, fatigue, pyrexia, cough, nausea, upper respiratory infection, pneumonia, musculoskeletal pain, and anemia.

Table 4. Common Adverse Reactions (≥ 10% Incidence) in Patients with B-cell Malignancies Receiving COPIKTRA

Adverse Reactions	COPIKTRA 25 mg BID (N = 442)	
	Any Grade n (%)	Grade ≥ 3 n (%)
Blood and lymphatic system disorders		
Neutropenia †	151 (34)	132 (30)
Anemia †	90 (20)	48 (11)
Thrombocytopenia †	74 (17)	46 (10)
Gastrointestinal disorders		
Diarrhea or colitis † ^a	222 (50)	101 (23)
Nausea †	104 (24)	4 (< 1)
Abdominal pain	78 (18)	9 (2)
Vomiting	69 (16)	6 (1)
Mucositis	61 (14)	6 (1)
Constipation	57 (13)	1 (< 1)
General disorders and administration site conditions		
Fatigue †	126 (29)	22 (5)
Pyrexia	115 (26)	7 (2)
Hepatobiliary disorders		
Transaminase elevation † ^b	67 (15)	34 (8)
Infections and infestations		
Upper respiratory tract infection †	94 (21)	2 (< 1)
Pneumonia † ^c	91 (21)	67 (15)
Lower respiratory tract infection †	46 (10)	11 (3)
Metabolism and nutrition disorders		
Decreased appetite	63 (14)	2 (< 1)
Edema †	60 (14)	6 (1)
Hypokalemia †	45 (10)	17 (4)
Musculoskeletal and connective tissue disorders		
Musculoskeletal pain †	90 (20)	6 (1)
Arthralgia	46 (10)	1 (< 1)

Adverse Reactions	COPIKTRA 25 mg BID (N = 442)	
	Any Grade n (%)	Grade ≥ 3 n (%)
Nervous system disorders		
Headache †	55 (12)	1 (< 1)
Respiratory, thoracic and mediastinal disorders		
Cough †	111 (25)	2 (< 1)
Dyspnea †	52 (12)	8 (2)
Skin and subcutaneous tissue disorders		
Rash † ^d	136 (31)	41 (9)

† Grouped term for reactions with multiple preferred terms

^a Diarrhea or colitis includes the preferred terms: colitis, enterocolitis, colitis microscopic, colitis ulcerative, diarrhea, diarrhea hemorrhagic

^b Transaminase elevation includes the preferred terms: alanine aminotransferase increased, aspartate aminotransferase increased, transaminases increased, hypertransaminasemia, hepatocellular injury, hepatotoxicity

^c Pneumonia includes the preferred terms: All preferred terms containing "pneumonia" except for "pneumonia aspiration"; bronchopneumonia, bronchopulmonary aspergillosis

^d Rash includes the preferred terms: dermatitis (including allergic, exfoliative, perivascular), erythema (including multiforme), rash (including exfoliative, erythematous, follicular, generalized, macular & papular, pruritic, pustular), toxic epidermal necrolysis and toxic skin eruption, drug reaction with eosinophilia and systemic symptoms, drug eruption, Stevens-Johnson syndrome

Grade 4 adverse reactions occurring in ≥ 2% of recipients of COPIKTRA included neutropenia (18%), thrombocytopenia (6%), sepsis (3%), hypokalemia and increased lipase (2% each), and pneumonia and pneumonitis (2% each).

Table 5. Most Common New or Worsening Laboratory Abnormalities ($\geq 20\%$ Any Grade) in Patients with B-cell Malignancies Receiving COPIKTRA

Laboratory Parameter ^a	COPIKTRA 25 mg BID (N = 442)	
	Any Grade n (%) ^b	Grade ≥ 3 n (%) ^b
Hematology abnormalities		
Neutropenia	276 (63)	184 (42)
Anemia	198 (45)	66 (15)
Thrombocytopenia	170 (39)	65 (15)
Lymphocytosis	132 (30)	92 (21)
Leukopenia	129 (29)	34 (8)
Lymphopenia	90 (21)	39 (9)
Chemistry abnormalities		
ALT increased	177 (40)	34 (8)
AST increased	163 (37)	24 (6)
Lipase increased	133 (36)	58 (16)
Hypophosphatemia	136 (31)	23 (5)
ALP increased	128 (29)	7 (2)
Serum amylase increased	101 (28)	16 (4)
Hyponatremia	116 (27)	30 (7)
Hyperkalemia	114 (26)	14 (3)
Hypoalbuminemia	111 (25)	7 (2)
Creatinine increased	106 (24)	7 (2)
Hypocalcemia	100 (23)	12 (3)

^a Includes laboratory abnormalities that are new or worsening in grade or with worsening from baseline unknown.

^b Percentages are based on number of patients with at least one post-baseline assessment; not all patients were evaluable.

Grade 4 laboratory abnormalities developing in $\geq 2\%$ of patients included neutropenia (24%), thrombocytopenia (7%), lipase increase (4%), lymphocytopenia (3%), and leukopenia (2%).

Summary of Clinical Trial Experience in CLL/SLL

DUO Study

The safety data below reflects exposure in a randomized, open-label, actively controlled clinical trial for adult patients with CLL or SLL who received at least one prior therapy. Of 313 patients

treated, 158 received COPIKTRA monotherapy and 155 received ofatumumab. The 442-patient safety analysis above includes patients from *DUO* [see *Clinical Studies (14)*].

COPIKTRA was administered at 25 mg BID in 28-day treatment cycles until unacceptable toxicity or progressive disease. The comparator group received 12 doses of ofatumumab with an initial dose of 300 mg intravenous (IV) on Day 1 followed a week later by 7 weekly doses of 2000 mg IV, followed 4 weeks later by 2000 mg IV every 4 weeks for 4 doses.

In the total study population, the median age was 69 years (range: 39 to 90 years), 60% were male, 92% were White, and 91% had an ECOG performance status of 0 to 1. Patients had a median of 2 prior therapies, with 61% of patients having received 2 or more prior therapies. The trial required a hemoglobin \geq 8 g/dL and platelets \geq 10,000 μ L with or without transfusion support, hepatic transaminases \leq 3 times upper limit of normal (ULN), total bilirubin \leq 1.5 times ULN, and serum creatinine \leq 2 times ULN. The trial excluded patients with prior autologous transplant within 6 months or allogeneic transplant, prior exposure to a PI3K inhibitor or a Bruton's tyrosine kinase (BTK) inhibitor, and uncontrolled autoimmune hemolytic anemia or idiopathic thrombocytopenic purpura [see *Clinical Studies (14)*].

During randomized treatment, the median duration of exposure to COPIKTRA was 11.6 months with 72% (114/158) exposed for \geq 6 months and 49% (77/158) exposed for \geq 1 year. The median duration of exposure to ofatumumab was 5.3 months, with 77% (120/155) receiving at least 10 of 12 doses.

Fatal adverse reactions within 30 days of the last dose occurred in 12% (19/158) of patients treated with COPIKTRA and in 4% (7/155) of patients treated with ofatumumab.

Serious adverse reactions were reported in 73% (115/158) of patients treated with COPIKTRA and most often involved infection (38% of patients; 60/158) and diarrhea or colitis (23% of patients; 36/158).

COPIKTRA was discontinued in 57 patients (36%), most often due to diarrhea or colitis, infection, and rash. COPIKTRA was dose reduced in 46 patients (29%) due to adverse reactions, most often due to diarrhea or colitis and rash.

Common Adverse Reactions

Table 6 summarizes selected adverse reactions in Study 1, and Table 7 summarizes treatment-emergent laboratory abnormalities. The most common adverse reactions with COPIKTRA (reported in \geq 20% of patients) were diarrhea or colitis, neutropenia, pyrexia, upper respiratory tract infection, pneumonia, rash, fatigue, nausea, anemia and cough.

Table 6.

Common Nonhematologic Adverse Reactions (≥ 10% Incidence) in Patients with CLL/SLL Receiving COPIKTRA (DUO)

Adverse Reactions	COPIKTRA N = 158		Ofatumumab N = 155	
	Any Grade (%)	Grade ≥ 3 (%)	Any Grade (%)	Grade ≥ 3 (%)
Gastrointestinal disorders				
Diarrhea or colitis ^{†a}	57	25	14	2
Nausea [†]	23	0	11	0
Constipation	17	<1	8	0
Abdominal pain	16	3	7	0
Vomiting	15	0	7	0
General disorders and administration site conditions				
Pyrexia	29	3	10	<1
Fatigue [†]	25	4	23	4
Hepatobiliary disorders				
Transaminase elevation ^{†d}	11	6	4	<1
Infections and infestations				
Upper respiratory tract infection [†]	28	0	16	<1
Pneumonia ^{†b}	27	22	8	3
Lower respiratory tract infection [†]	18	4	10	1
Investigations				
Weight decreased	11	0	2	0
Metabolism and nutrition disorders				
Decreased appetite	13	0	3	<1
Edema [†]	11	1	5	0
Musculoskeletal and connective tissue disorders				
Musculoskeletal pain [†]	17	1	12	<1
Respiratory, thoracic and mediastinal disorders				
Cough [†]	23	1	16	0

Adverse Reactions	COPIKTRA N = 158		Ofatumumab N = 155	
	Any Grade (%)	Grade ≥ 3 (%)	Any Grade (%)	Grade ≥ 3 (%)
Dyspnea	12	3	7	0
Skin and subcutaneous tissue disorders				
Rash ^{†c}	27	11	15	<1

Grades were obtained per CTCAE version 4.03.

† Grouped term for reactions with multiple preferred terms

^a Diarrhea or colitis includes the preferred terms: colitis, enterocolitis, colitis microscopic, colitis ulcerative, diarrhea

^b Pneumonia includes the preferred terms: All preferred term containing "pneumonia" except for "pneumonia aspiration"; bronchopneumonia, bronchopulmonary aspergillosis

^c Rash includes the preferred terms: dermatitis (including allergic, exfoliative, perivascular), erythema (including multiforme), rash (including exfoliative, erythematous, follicular, generalized, macular & papular, pruritic, pustular), toxic skin eruption, drug eruption

^d Transaminase elevation includes the preferred terms: alanine aminotransferase increased, aspartate aminotransferase increased, transaminases increased, hepatotoxicity

Table 7.**Most Common New or Worsening Laboratory Abnormalities ($\geq 20\%$ Any Grade) in Patients with CLL/SLL Receiving COPIKTRA (DUO)**

Laboratory Parameter	COPIKTRA N = 158		Ofatumumab N = 155	
	Any Grade (%)	Grade ≥ 3 (%)	Any Grade (%)	Grade ≥ 3 (%)
Hematology abnormalities				
Neutropenia	67	49	52	37
Anemia	55	20	36	7
Thrombocytopenia	43	16	34	8
Lymphocytosis	30	22	11	6
Chemistry abnormalities				
ALT increased	42	7	12	0
Lipase increased	37	12	15	3
AST increased	36	3	14	1
Phosphate decreased	34	3	20	3
Hyperkalemia	31	4	24	1
Hyponatremia	31	7	18	3
Amylase increased	31	5	10	1
Hypoalbuminemia	31	2	15	1
Creatinine increased	29	1	31	0
Alkaline phosphatase increased	27	0	14	0
Hypocalcemia	25	1	17	1
Hypokalemia	20	8	8	0

Grades were obtained per CTCAE version 4.03.

Grade 4 laboratory abnormalities that developed in $\geq 2\%$ of COPIKTRA treated patients included neutropenia (32%), thrombocytopenia (6%), lymphopenia (3%), and hypokalemia (2%).

The data above are not an adequate basis for comparison of rates between the study drug and the active control.

Long-Term Safety Follow-Up

The comparative safety data from the 5 year follow up in those treated with either COPIKTRA (n=158) or ofatumumab (n=155) were analyzed in adult patients with CLL or SLL as part of a randomized, open-label, actively controlled clinical trial (DUO) [see *Clinical Studies (14)*].

Fatal adverse reactions occurred in 15% (23/158) of patients treated with COPIKTRA and in 3% (5/155) of patients treated with ofatumumab. The most common fatal adverse reactions in the COPIKTRA arm were infections and respiratory adverse reactions, occurring in 9% and 3% of patients, respectively.

7 DRUG INTERACTIONS

7.1 Effects of Other Drugs on COPIKTRA

Strong CYP3A4 Inhibitors

Coadministration with a strong CYP3A4 inhibitor increases duvelisib AUC [see *Clinical Pharmacology (12.3)*], which may increase the risk of COPIKTRA toxicities. Reduce COPIKTRA dosage when co-administered with a strong CYP3A4 inhibitor [see *Dosage and Administration (2.4)*].

Strong and Moderate CYP3A4 Inducers

Coadministration with a strong or moderate CYP3A4 inducer decreases duvelisib area under the curve (AUC) [see *Clinical Pharmacology (12.3)*], which may reduce COPIKTRA efficacy. Avoid coadministration of strong or moderate CYP3A4 inducers with COPIKTRA. If coadministration with a moderate CYP3A4 inducer cannot be avoided, increase the COPIKTRA dose. [see *Dosage and Administration (2.5)*, *Clinical Pharmacology (12.3)*].

7.2 Effects of COPIKTRA on Other Drugs

CYP3A4 Substrates

Coadministration with COPIKTRA increases AUC of a sensitive CYP3A4 substrate [see *Clinical Pharmacology (12.3)*] which may increase the risk of toxicities of these drugs. Consider reducing the dose of the sensitive CYP3A4 substrate and monitor for signs of toxicities of the co-administered sensitive CYP3A4 substrate.

8 USE IN SPECIFIC POPULATIONS

8.1 Pregnancy

Risk Summary

Based on findings from animal studies and the mechanism of action, COPIKTRA can cause fetal harm when administered to a pregnant woman [see *Clinical Pharmacology (12.1)*].

There are no available data in pregnant women to inform the drug-associated risk. In animal reproduction studies, administration of duvelisib to pregnant rats and rabbits during organogenesis caused adverse developmental outcomes including embryo-fetal mortality (resorptions, post-implantation loss, and decreased viable fetuses), alterations to growth (lower

fetal weights) and structural abnormalities (malformations) at maternal doses 10 times and 39 times the MRHD of 25 mg BID in rats and rabbits, respectively (*see Data*).

The estimated background risk of major birth defects and miscarriage for the indicated population is unknown. All pregnancies have a background risk of birth defect, loss, or other adverse outcomes. In the U.S. general population, the estimated background risk of major birth defects and miscarriage in clinically recognized pregnancies is 2 to 4% and 15 to 20%, respectively.

Data

Animal Data

In an embryo-fetal development study in rats, pregnant animals received daily oral doses of duvelisib of 0, 10, 50, 150 and 275 mg/kg/day during the period of organogenesis. Administration of duvelisib at doses ≥ 50 mg/kg/day resulted in adverse developmental outcomes including reduced fetal weights and external abnormalities (bent tail and fetal anasarca), and doses ≥ 150 mg/kg/day resulted in maternal toxicity including mortality and no live fetuses (100% resorption) in surviving dams. In another study in pregnant rats receiving oral doses of duvelisib up to 35 mg/kg/day during the period of organogenesis, no maternal or embryo-fetal effects were observed. The dose of 50 mg/kg/day in rats is approximately 10 -times the MRHD of 25 mg BID.

In an embryo-fetal development study in rabbits, pregnant animals received daily oral doses of duvelisib of 0, 25, 100, and 200 mg/kg/day during the period of organogenesis. Administration of duvelisib at doses ≥ 100 mg/kg/day resulted in maternal toxicity (body weight losses or lower mean body weights and increased mortality) and adverse developmental outcomes (increased resorptions and post-implantation loss, abortion, and decreased numbers of viable fetuses). In another study in pregnant rabbits receiving oral doses of duvelisib up to 75 mg/kg/day, no maternal or embryo-fetal effects were observed. The dose of 100 mg/kg/day in rabbits is approximately 39 times the MRHD of 25 mg BID.

8.2 Lactation

Risk Summary

There are no data on the presence of duvelisib and/or its metabolites in human milk, the effects on the breastfed child, or on milk production. Because of the potential for serious adverse reactions from duvelisib in a breastfed child, advise lactating women not to breastfeed while taking COPIKTRA and for 1 month after the last dose.

8.3 Females and Males of Reproductive Potential

COPIKTRA can cause fetal harm when administered to a pregnant woman [*see Use in Specific Populations (8.1)*].

Pregnancy Testing

Conduct pregnancy testing before initiation of COPIKTRA treatment.

Contraception

Females

Based on animal studies, COPIKTRA can cause fetal harm when administered to a pregnant woman. Advise females of reproductive potential to use effective contraception during treatment with COPIKTRA and for 1 month after the last dose.

Males

Advise male patients with female partners of reproductive potential to use effective contraception during treatment with COPIKTRA and for 1 month after the last dose.

Infertility

Based on testicular findings in animals, male fertility may be impaired by treatment with COPIKTRA [see *Nonclinical Toxicology (13.1)*]. There are no data on the effect of COPIKTRA on human fertility.

8.4 Pediatric Use

Safety and effectiveness of COPIKTRA have not been established in pediatric patients. Pediatric studies have not been conducted.

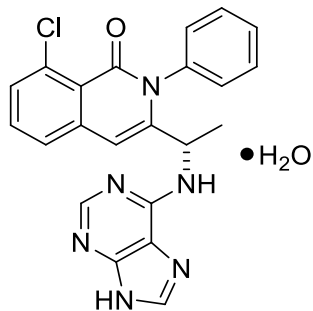
8.5 Geriatric Use

Clinical trials of COPIKTRA included 270 patients (61%) that were 65 years of age and older and 104 (24%) that were 75 years of age and older. No major differences in efficacy or safety were observed between patients less than 65 years of age and patients 65 years of age and older.

11 DESCRIPTION

COPIKTRA (duvelisib) is a kinase inhibitor.

Duvelisib is a white-to-off-white crystalline solid with the empirical formula $C_{22}H_{17}ClN_6O \cdot H_2O$ and a molecular weight of 434.88 g/mol. Hydration can vary with relative humidity. Duvelisib contains a single chiral center as (*S*) enantiomer. Duvelisib is soluble in ethanol and practically insoluble in water. Duvelisib is described chemically as a hydrate of (*S*)-3-(1-(9H-purin-6-ylamino)ethyl)-8-chloro-2-phenylisoquinolin-1(2H)-one and has the following chemical structure:



COPIKTRA capsules are for oral administration and are supplied as white to off-white opaque and Swedish orange opaque capsules (25 mg, on anhydrous basis) or pink opaque capsules (15

mg, on anhydrous basis), and contain the following inactive ingredients: colloidal silicon dioxide, crospovidone, magnesium stearate, and microcrystalline cellulose. Capsule shells contain gelatin, titanium dioxide, black ink, and red iron oxide.

12 CLINICAL PHARMACOLOGY

12.1 Mechanism of Action

Duvelisib is an inhibitor of PI3K with inhibitory activity predominantly against PI3K- δ and PI3K- γ isoforms expressed in normal and malignant B-cells. Duvelisib induced growth inhibition and reduced viability in cell lines derived from malignant B-cells and in primary CLL tumor cells. Duvelisib inhibits several key cell-signaling pathways, including B-cell receptor signaling and CXCR12-mediated chemotaxis of malignant B-cells. Additionally, duvelisib inhibits CXCL12-induced T cell migration and M-CSF and IL-4 driven M2 polarization of macrophages.

12.2 Pharmacodynamics

At the recommended dose of 25 mg BID, reductions in levels of phosphorylated AKT (a downstream marker for PI3K inhibition) were observed in patients treated with COPIKTRA.

Cardiac Electrophysiology

The effect of multiple doses of COPIKTRA 25 and 75 mg BID on the QTc interval was evaluated in patients with previously treated hematologic malignancies. Increases of > 20 ms in the QTc interval were not observed.

12.3 Pharmacokinetics

Duvelisib exposure increased in a dose-proportional manner over a dose range of 8 mg to 75 mg twice daily (0.3 to 3 times the recommended dosage).

At steady state following 25 mg BID administration of duvelisib in patients, the geometric mean (CV%) maximum concentration (C_{max}) was 1.5 (64%) $\mu\text{g/mL}$ and AUC was 7.9 (77%) $\mu\text{g}\cdot\text{h/mL}$.

Absorption

The absolute bioavailability of 25 mg duvelisib after a single oral dose in healthy volunteers was 42%. The median time to peak concentration (T_{max}) was observed at 1 to 2 hours in patients.

Effect of Food

COPIKTRA may be administered without regard to food. The administration of a single dose of COPIKTRA with a high-fat meal (fat accounted for approximately 50% of the total caloric content of the meal) decreased C_{max} by approximately 37% and decreased the AUC by approximately 6%, relative to fasting conditions.

Distribution

Protein binding of duvelisib is greater than 98% with no concentration dependence. The mean blood-to-plasma ratio was 0.5. The geometric mean (CV%) apparent volume of distribution at steady state (V_{ss}/F) is 28.5 L (62%). Duvelisib is a substrate of P-glycoprotein (P-gp) and BCRP in vitro.

Elimination

The geometric mean (CV%) apparent systemic clearance at steady-state is 4.2 L/hr (56%) in patients with lymphoma or leukemia. The geometric mean (CV%) terminal elimination half-life of duvelisib is 4.7 hours (57%).

Metabolism

Duvelisib is primarily metabolized by cytochrome P450 CYP3A4.

Excretion

Following a single 25 mg oral dose of radiolabeled duvelisib, 79% of the radioactivity was excreted in feces (11% unchanged) and 14% was excreted in the urine (< 1% unchanged).

Specific Populations

Age (18 to 90 years), sex, race, renal impairment (creatinine clearance 23 to 80 mL/ min), hepatic impairment (Child Pugh Class A, B, and C) and body weight (40 to 154 kg) had no clinically significant effect on the exposure of duvelisib.

Drug Interaction Studies

CYP3A4 Inhibitors

Coadministration of a single COPIKTRA 10 mg dose with ketoconazole (strong CYP3A4 inhibitor) at 200 mg BID for 5 days in healthy adults increased duvelisib C_{max} by 1.7-fold and AUC by 4-fold. Based on physiologically-based pharmacokinetic (PBPK) modeling and simulation, the increase in duvelisib exposure at steady state is estimated to be ~2-fold when coadministered with strong CYP3A4 inhibitors [see *Dosage and Administration (2.4)* and *Drug Interactions (7.1)*]. PBPK modeling and simulation estimated no effect on duvelisib exposures from concomitantly used mild or moderate CYP3A4 inhibitors.

Strong and Moderate CYP3A4 Inducers

Coadministration of a single COPIKTRA 25 mg dose with rifampin (strong CYP3A4 inducer) 600 mg once daily for 7 days in healthy adults decreased duvelisib C_{max} by 66% and AUC by 82% [see *Dosage and Administration (2.5)* and *Drug Interactions (7.1)*].

Co-administration of etravirine (moderate CYP3A4 inducer) 200 mg twice daily of etravirine for 12 days with a single COPIKTRA 25 mg dose in healthy adults decreased duvelisib C_{max} by 16% and AUC by 35%. [see *Dosage and Administration (2.5)* and *Drug Interactions (7.1)*].

CYP3A4 Substrates

Coadministration of multiple doses of COPIKTRA 25 mg BID for 5 days with a single midazolam (sensitive CYP3A4 substrate) 2 mg dose in healthy adults increased the midazolam AUC by 4.3-fold and C_{max} by 2.2-fold [see *Drug Interactions (7.2)*].

In Vitro Studies

Duvelisib is a substrate of P-glycoprotein (P-gp) and breast cancer-resistant protein (BCRP).

Duvelisib does not inhibit OAT1, OAT3, OCT1, OCT2, OATP1B1, OATP1B3, BCRP, or P-gp.

13 NONCLINICAL TOXICOLOGY

13.1 Carcinogenesis, Mutagenesis, Impairment of Fertility

Carcinogenicity studies have not been conducted with duvelisib.

Duvelisib did not cause genetic damage in in vitro or in vivo assays.

Fertility studies with duvelisib were not conducted. Histological findings in male and female rats were observed in the repeat dose toxicity studies and included testis (seminiferous epithelial atrophy, decreased weight, soft testes), and epididymis (small size, oligo/aspermia) in males and ovary (decreased weight) and uterus (atrophy) in females.

14 CLINICAL STUDIES

DUO Study

A randomized, multicenter, open-label trial (DUO Study; NCT02004522) compared COPIKTRA versus ofatumumab in 319 adult patients with CLL (N = 312) or SLL (N = 7) after at least one prior therapy. The trial excluded patients with prior autologous transplant within 6 months or allogeneic transplant, prior exposure to a PI3K inhibitor or a Bruton's tyrosine kinase (BTK) inhibitor. The trial required hepatic transaminases ≤ 3 times upper limit of normal (ULN), total bilirubin ≤ 1.5 times ULN, and serum creatinine ≤ 2 times ULN.

The study randomized patients with a 1:1 ratio to receive either COPIKTRA 25 mg BID until disease progression or unacceptable toxicity or ofatumumab for 7 cycles. Ofatumumab was administered intravenously at an initial dose of 300 mg, followed one week later by 2000 mg once weekly for 7 doses, and then 2000 mg once every 4 weeks for 4 additional doses.

The approval of COPIKTRA was based on efficacy and safety analysis of patients with at least 2 prior lines of therapy, where the benefit:risk appeared greater in this more heavily pretreated population compared to the overall trial population.

In this subset (95 randomized to COPIKTRA, 101 to ofatumumab), the median patient age was 69 years (range: 40 to 90 years), 59% were male, and 88% had an ECOG performance status of 0 or 1. Forty-six percent received 2 prior lines of therapy, and 54% received 3 or more prior lines. At baseline, 52% of patients had at least one tumor ≥ 5 cm, and 22% of patients had a documented 17p deletion.

During randomized treatment, the median duration of exposure to COPIKTRA was 13 months (range: 0.2 to 37), with 80% of patients receiving at least 6 months and 52% receiving at least 12 months of COPIKTRA. The median duration of exposure to ofatumumab was 5 months (range: < 0.1 to 6).

Efficacy was based on progression-free survival (PFS) as assessed by an Independent Review Committee (IRC). Other efficacy measures included overall response rate. Efficacy of COPIKTRA compared to ofatumumab specifically in patients treated with at least two prior therapies is presented in [Table 8](#) and [Figure 1](#).

Table 8.**Efficacy in CLL or SLL After at Least Two Prior Therapies (DUO)**

Outcome per IRC	COPIKTRA N = 95	Ofatumumab N = 101
PFS		
Number of events, n (%)	55 (58)	70 (69)
Progressive disease	44	62
Death	11	8
Median PFS (SE), months ^a	16.4 (2.1)	9.1 (0.5)
Hazard Ratio (SE), ^b COPIKTRA/ofatumumab	0.40 (0.2)	
Response rate		
ORR, n (%) ^c	74 (78)	39 (39)
CR	0 (0)	0 (0)
PR	74 (78)	39 (39)
Difference in ORR, % (SE)	39 (6.4)	

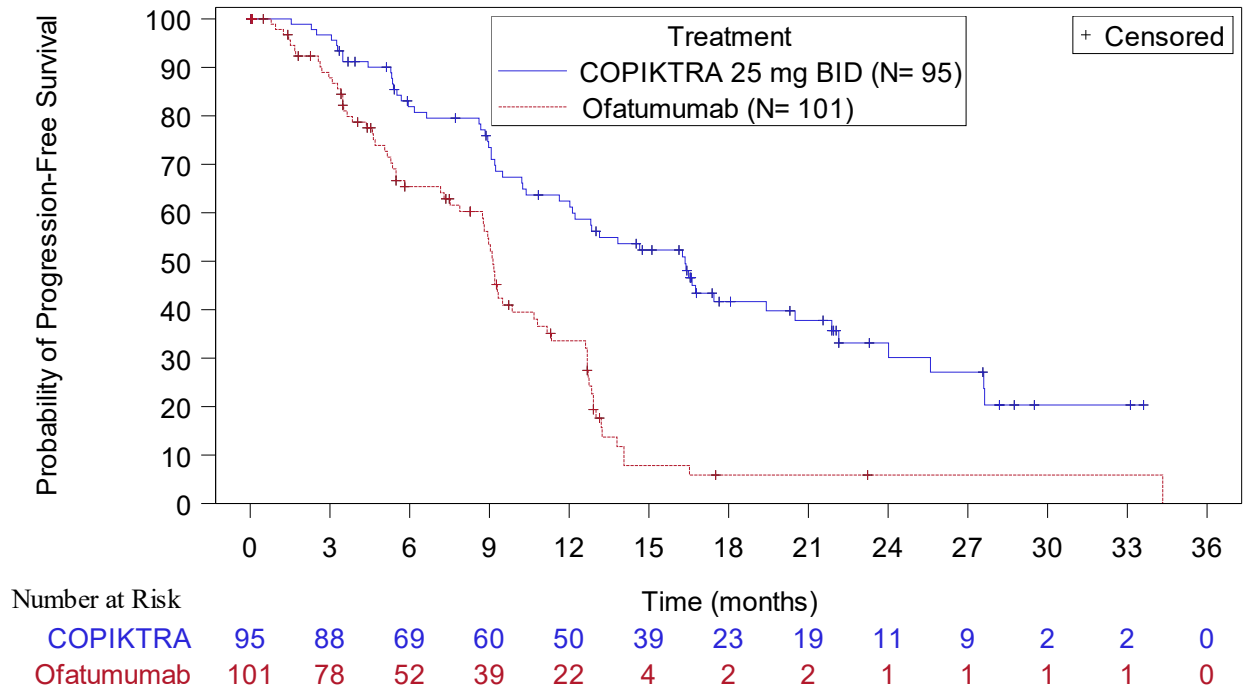
Abbreviations: CI = confidence interval; CR = complete response; IRC = Independent Review Committee; PFS = progression-free survival; PR = partial response; SE = standard error

^a Kaplan-Meier estimate

^b Standard Error of ln(hazard ratio) = 0.2

^c IWCLL or revised IWG response criteria, with modification for treatment-related lymphocytosis

Figure 1. Kaplan-Meier Curve of PFS per IRC In Patients with at Least 2 Prior Therapies (DUO)



Increased Mortality in Patients with Relapsed or Refractory CLL or SLL Treated with COPIKTRA

Final overall survival (OS) analysis was conducted with a median follow-up time of 63 months. Fifty percent (80/160) of patients in the overall population died in the COPIKTRA arm, and 44% (70/159) of patients died in the ofatumumab arm. Treatment of patients in the overall population with duvelisib compared with ofatumumab demonstrated an OS HR of 1.09 (95% CI: 0.79, 1.51) with a median OS of 52 months (95% CI: 42, 68) in those patients treated with COPIKTRA and a median OS of 63 months (95% CI: 41 mo, NE) in those treated with ofatumumab. In the indicated population, those patients with relapsed or refractory CLL or SLL after at least 2 prior lines of systemic therapy, 56% (53/95) of patients died in the COPIKTRA arm and 49% (49/101) of patients died in the ofatumumab arm. Treatment of patients in the indicated population with duvelisib compared with ofatumumab demonstrated an OS HR of 1.06 (95% CI: 0.71, 1.58) with a median OS of 44 months (95% CI: 32, 57) in those patients treated with COPIKTRA and a median OS of 47 months (95% CI: 29,75) in those treated with ofatumumab.

16 HOW SUPPLIED/STORAGE AND HANDLING

COPIKTRA (duvelisib) capsules are supplied as follows:

Capsule Strength	Description	Package Configuration	NDC No.
25 mg	White to off-white and Swedish orange opaque capsules marked with “duv 25 mg” in black ink	<ul style="list-style-type: none">14-day (28ct) single blister pack28-day (56ct) carton (2 × 28ct blister packs per carton)	<ul style="list-style-type: none">73116-225-2873116-225-56
15 mg	Pink opaque capsules marked with “duv 15 mg” in black ink	<ul style="list-style-type: none">14-day (28ct) single blister pack28-day (56ct) carton (2 × 28ct blister packs per carton)	<ul style="list-style-type: none">73116-215-2873116-215-56

Abbreviations: HDPE = high-density polyethylene; NDC = National Drug Code; No. = number

Store at 20° to 25°C (68° to 77°F), with excursions permitted at 15° to 30°C (59° to 86°F) [see USP Controlled Room Temperature]. Retain in original package until dispensing. Dispense blister packs in original container.

17 PATIENT COUNSELING INFORMATION

Advise the patient to read the FDA-approved patient labeling (Medication Guide).

Physicians and healthcare professionals are advised to discuss the following with patients prior to treatment with COPIKTRA:

- *Treatment-related Mortality*

Advise patients that COPIKTRA has been associated with increased deaths due to side effects of therapy in a randomized study when compared to standard therapy. The main reason for death was infection [see *Warnings and Precautions (5.1)*].

Infections

Advise patients that COPIKTRA can cause serious infections that may be fatal. Advise patients to immediately report symptoms of infection (e.g., fever, chills) [see *Warnings and Precautions (5.2)*].

- *Diarrhea or Colitis*

Advise patients that COPIKTRA can cause serious diarrhea or colitis (inflammation of the gut) that may be fatal, and to notify their healthcare provider immediately about any new or worsening diarrhea, stool with mucus or blood, or abdominal pain [see *Warnings and Precautions (5.3)*].

- *Cutaneous Reactions*

Advise patients that COPIKTRA can cause a serious skin rash that may be fatal, and to notify their healthcare provider immediately if they develop a new or worsening skin rash [see *Warnings and Precautions (5.4)*].

- *Pneumonitis*

Advise patients that COPIKTRA may cause pneumonitis (inflammation of the lungs) that may be fatal, and to report any new or worsening respiratory symptoms including cough or difficulty breathing [see *Warnings and Precautions (5.5)*].

- *Hepatotoxicity*

Advise patients that COPIKTRA may cause significant elevations in liver enzymes, and that monitoring of liver tests is needed. Advise patients to report symptoms of liver dysfunction including jaundice (yellow eyes or yellow skin), abdominal pain, bruising, or bleeding [see *Warnings and Precautions (5.6)*].

- *Neutropenia*

Advise patients of the need for periodic monitoring of blood counts. Advise patients to notify their healthcare provider immediately if they develop a fever or any sign of infection [see *Warnings and Precautions (5.7)*].

- *Embryo-Fetal Toxicity*

Advise females to inform their healthcare provider if they are pregnant or become pregnant. Inform female patients of the risk to a fetus [see *Use in Specific Populations (8.1)*].

Advise females of reproductive potential to use effective contraception during treatment and for 1 month after receiving the last dose of COPIKTRA [see *Warnings and Precautions (5.8)* and *Use in Specific Populations (8.1, 8.3)*].

Advise males with female partners of reproductive potential to use effective contraception during treatment with COPIKTRA and for 1 month after the last dose [see *Warnings and Precautions (5.8)* and *Use in Specific Populations (8.1, 8.3)*].

- *Lactation*

Advise lactating women not to breastfeed during treatment with COPIKTRA and for 1 month after the last dose [see *Use in Specific Populations (8.2)*].

- *Instructions for Taking COPIKTRA*

Advise patients to take COPIKTRA exactly as prescribed. COPIKTRA may be taken with or without food; the capsules should be swallowed whole [see *Dosage and Administration (2.1)*].

Advise patients that if a dose is missed by fewer than 6 hours, to take the missed dose right away and take the next dose as usual. If a dose is missed by more than 6 hours, advise patients to wait and take the next dose at the usual time [see *Dosage and Administration (2.3)*].

Advise patients to inform their healthcare providers of all concomitant medications, including prescription medicines, over-the-counter drugs, vitamins, and herbal products, before and during treatment with COPIKTRA [see *Drug Interactions (7)*].

Distributed by:

Secura Bio, Inc.

200 Connell Drive, Suite 1100

Berkeley Heights, NJ 07922

© Secura Bio

USCPR250042-1