



Copiktra™
(duvelisib)^{15mg | 25mg}
capsules

*For those living with CLL, SLL, or FL
who have had at least 2 prior therapies*

EVERY JOURNEY NEEDS A PARTNER

Take the Next Step in Your Treatment Journey
by Talking with Your Doctor about COPIKTRA.

Not an actual patient

What is COPIKTRA™ (duvelisib)?

COPIKTRA is a prescription medicine used to treat adults with:

- Chronic Lymphocytic Leukemia (CLL) or Small Lymphocytic Lymphoma (SLL) who have received at least 2 prior therapies and they did not work or are no longer working.
- Follicular Lymphoma (FL) who have received at least 2 prior therapies and they did not work or are no longer working. There are ongoing studies to learn more about COPIKTRA in FL.

It is not known if COPIKTRA is safe and effective in children less than 18 years of age.

Please see Important Safety Information throughout and read the Medication Guide, which includes information on serious side effects, in the accompanying full Prescribing Information.

WELCOME TO COPIKTRA

COPIKTRA is a twice-daily oral medicine taken with or without food, allowing you to take treatments at home. COPIKTRA is an FDA-approved prescription treatment for adults with Chronic Lymphocytic Leukemia (CLL), Small Lymphocytic Lymphoma (SLL), or Follicular Lymphoma (FL) who have received at least two prior therapies that didn't work or are no longer working. There are ongoing studies to learn more about COPIKTRA in FL.

In the pages of this brochure, you'll discover how COPIKTRA works, its side effects, guidelines for taking COPIKTRA, and the support services provided by Secura Care™.

CLL/SLL CLINICAL STUDY RESULTS

COPIKTRA was approved based on 196 people with CLL or SLL who had at least two prior therapies. In the study, people who received COPIKTRA (95 people) were compared with those who received ofatumumab (101 people). For these people, COPIKTRA extended their time without their disease worsening by 7.3 months, compared with those who received ofatumumab.

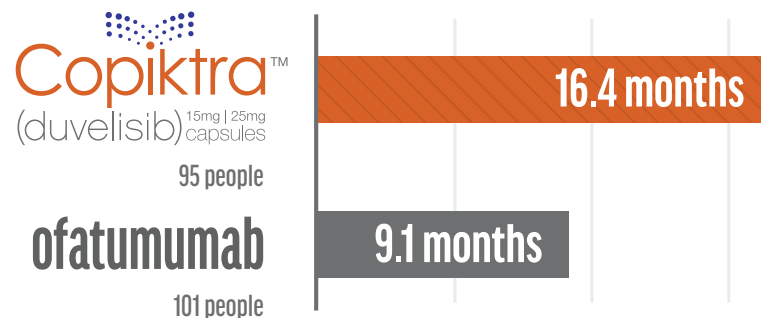
**MORE THAN 60% OF PEOPLE
TREATED WITH COPIKTRA WERE WITHOUT
THEIR DISEASE WORSENING AFTER 1 YEAR.**

Please see Important Safety Information throughout and read the Medication Guide, which includes information on serious side effects, in the accompanying full Prescribing Information.

COPIKTRA extended progression-free survival by 7.3 months in people treated for CLL/SLL when compared to ofatumumab.

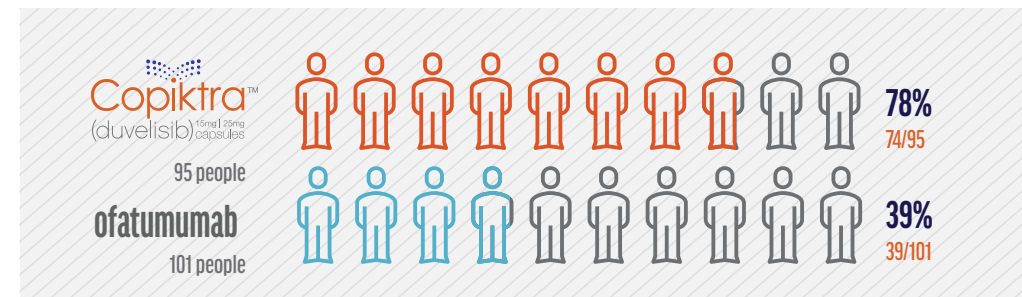
Progression-free survival (PFS) is the length of time on treatment that someone lives with cancer but it does not get worse. The study measured PFS with COPIKTRA and ofatumumab.

For those in the study, the median progression-free survival was 16.4 months for COPIKTRA vs. 9.1 months for ofatumumab. Median means the middle value, so half of the people in the study would fall above the value and half of people would fall below the value.



More than 7 out of 10 CLL/SLL people responded to treatment with COPIKTRA.

The study measured overall response rate (ORR) in people who had received at least two prior therapies. ORR is a percentage of people with a partial response or better in a clinical trial. A response means that fewer signs of the disease were observed in blood tests, x-rays, CT scans, or bone marrow tests.



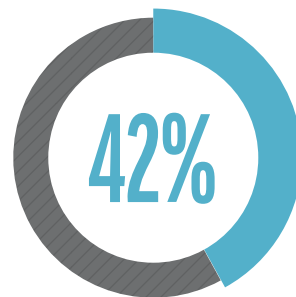
ORR was 78% with COPIKTRA compared to 39% with ofatumumab.

Please see Important Safety Information throughout and read the Medication Guide, which includes information on serious side effects, in the accompanying full Prescribing Information.

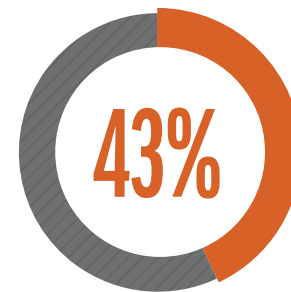
FL CLINICAL STUDY RESULTS

COPIKTRA is also used to treat adults with Follicular Lymphoma (FL) who have received at least 2 prior therapies and they did not work or are no longer working. There are ongoing studies to learn more about COPIKTRA in FL.

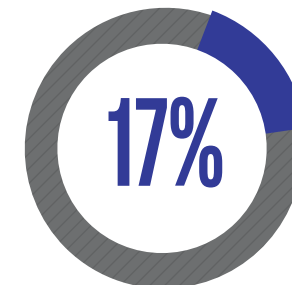
For people with FL, COPIKTRA was also studied in 83 people who had at least 2 prior therapies. The study measured overall response rate (ORR), which is a percentage of people with a partial response or better in a clinical trial. A response means that fewer signs of the disease were observed in blood tests, x-rays, CT scans, or bone marrow tests.



35/83 of people responded to COPIKTRA.



Out of the 35 people who responded to COPIKTRA, **15 people responded to treatment for at least 6 months.**



Out of the 35 people who responded to COPIKTRA, **6 people responded to treatment for at least 12 months.**

Please see Important Safety Information throughout and read the Medication Guide, which includes information on serious side effects, in the accompanying full Prescribing Information.

POSSIBLE SIDE EFFECTS OF COPIKTRA

What to be aware of and what you can do

Being aware of the possible side effects that you could experience while on COPIKTRA can help you and your healthcare team work out the best way to manage your treatment plan. Calling your doctor promptly is critical in addressing side effects.

It's important to tell your doctor about all side effects that you experience while taking COPIKTRA.

Your doctor may change your dose, pause your treatment, or completely stop it if you develop certain side effects during treatment with COPIKTRA.

WHAT IS THE MOST IMPORTANT INFORMATION I SHOULD KNOW ABOUT COPIKTRA?

COPIKTRA may cause serious side effects, including:

- **Infections.** Infections are common during COPIKTRA treatment, and can be serious and can lead to death. Tell your healthcare provider right away if you have a fever, chills, or other signs of an infection during treatment with COPIKTRA.
- **Diarrhea or inflammation of your intestine.** Diarrhea or inflammation of your intestine (colitis) is common during COPIKTRA treatment, and can be serious and can lead to death. Your healthcare provider may prescribe an antidiarrhea medicine for your diarrhea. Tell your healthcare provider right away if you have any new or worsening diarrhea, stool with mucus or blood, or if you have severe stomach-area (abdominal) pain. Your healthcare provider should prescribe medicine to help your diarrhea and check you at least weekly. If your diarrhea is severe or anti-diarrhea medicines did not work, you may need treatment with a steroid medicine.

Please see additional Important Safety Information throughout and read the Medication Guide, which includes information on serious side effects, in the accompanying full Prescribing Information.

- **Skin reactions.** Rashes are common with COPIKTRA treatment. COPIKTRA can cause rashes and other skin reactions that can be serious and can lead to death. Tell your healthcare provider right away if you get a new or worsening skin rash, or other skin reactions during treatment with COPIKTRA, including:

- painful sores or ulcers on your skin, lips, or in your mouth
- severe rash with blisters or peeling skin
- rash with itching
- rash with fever

Your healthcare provider may need to prescribe medicines, including a steroid medicine, to help treat your skin rash or other skin reactions.

- **Inflammation of the lungs.** COPIKTRA can cause inflammation of your lungs which can be serious and can lead to death. Tell your healthcare provider right away if you get new or worsening cough or difficulty breathing. Your healthcare provider may do tests to check your lungs if you have breathing problems during treatment with COPIKTRA. Your healthcare provider may treat you with a steroid medicine if you develop inflammation of the lungs that is not due to an infection.

If you have any of the above serious side effects during treatment with COPIKTRA, your healthcare provider may stop your treatment for a period of time, change your dose of COPIKTRA, or completely stop your treatment with COPIKTRA.

- **Elevated liver enzymes.** COPIKTRA may cause abnormalities in liver blood tests. Your healthcare provider should do blood tests during your treatment with COPIKTRA to check for liver problems. Tell your doctor immediately if you experience symptoms such as yellowing of your skin or the white part of your eyes (jaundice), pain in the abdominal region, bruising or bleeding more easily than normal.
- **Low white blood cell count (neutropenia).** Neutropenia is common with COPIKTRA treatment, and your healthcare provider should check your blood counts regularly. Tell your doctor right away if you have a fever or any signs of infection during treatment with COPIKTRA.

Please see additional Important Safety Information throughout and read the Medication Guide, which includes information on serious side effects, in the accompanying full Prescribing Information.

THE MOST COMMON SIDE EFFECTS OF COPIKTRA



Tiredness



Fever



Cough



Nausea



**Upper respiratory
infection**



**Bone and
muscle pain**



Low red blood cell count

These are not all the possible side effects of COPIKTRA.

Please call your healthcare provider to discuss. Calling your doctor promptly is critical in addressing side effects. There may be things that your doctor can do to help manage your side effects.

These are not all the possible side effects of COPIKTRA. Call your doctor for medical advice about side effects. You may report side effects to FDA at 1-800-FDA-1088 and to Secura Bio, Inc. at 1-844-973-2872.

TALK TO YOUR DOCTOR ABOUT THE POSSIBLE SIDE EFFECTS OF COPIKTRA

Your doctor has prepared you for potential side effects. While some serious side effects may cause patients to stop taking COPIKTRA altogether, other side effects may be managed through dose modification, additional medications, or other techniques. Always talk with your healthcare team to determine how to best manage side effects.



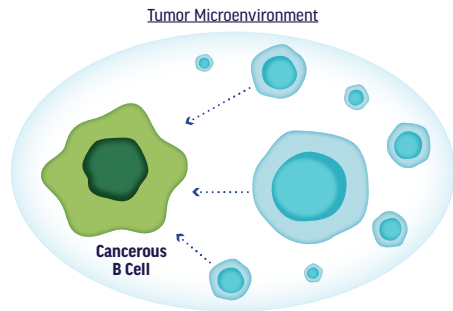
Your doctor may change your dose of COPIKTRA or tell you to stop taking COPIKTRA. Do not change your dose or stop taking COPIKTRA without talking to your doctor first.

Please see additional Important Safety Information throughout and read the Medication Guide, which includes information on serious side effects, in the accompanying full Prescribing Information.

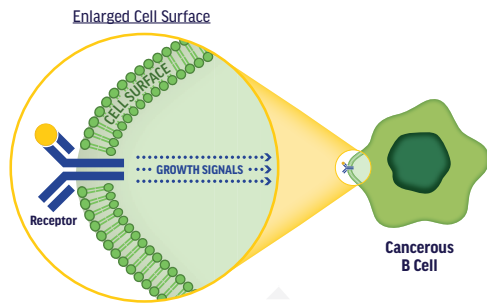
HOW COPIKTRA WORKS

COPIKTRA blocks the growth of CLL/SLL and FL cancer cells.

To grow and survive, CLL/SLL and FL cancer cells need two things: a signal that tells the cell to grow and a network of non-cancerous cells and molecules that support the cancer cell.



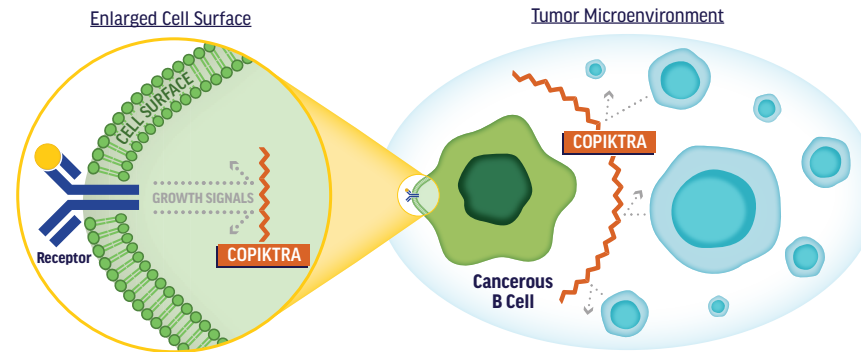
For CLL/SLL and FL there is a network of non-cancerous cells and molecules that support the cancer cell. This is called the tumor microenvironment. The tumor microenvironment produces protein that the cancer cells need to survive.



Special receptors on the surface of the cell stimulate the cancer to grow.

COPIKTRA works outside the cancer cell and inside the cancer cell.

COPIKTRA disrupts the signaling inside the cancer cell that allows it to grow. It also changes the network of non-cancerous cells and molecules so they are less supportive of the survival and growth of the cancer cell.



Please see Important Safety Information throughout and read the Medication Guide, which includes information on serious side effects, in the accompanying full Prescribing Information.

TAKING COPIKTRA



Not actual size

1 CAPSULE

2X DAILY

COPIKTRA is one capsule taken twice daily.

COPIKTRA offers a convenient twice-daily oral administration and can be taken with or without food.

- Take COPIKTRA exactly the way your doctor tells you
- Take COPIKTRA two times a day
- Swallow COPIKTRA capsules whole
- Do not open, break, or chew your COPIKTRA capsules



Your doctor may change your dose of COPIKTRA or tell you to stop taking COPIKTRA. Do not change your dose or stop taking COPIKTRA without talking to your doctor first.

WHAT IF I FORGET TO TAKE COPIKTRA?

If you miss a dose of COPIKTRA and it has been:



Less than 6 hours since your regular time:

- Take the missed dose right away
- Take the next dose as usual



More than 6 hours since your regular time:

- Wait and take the next dose at your usual time



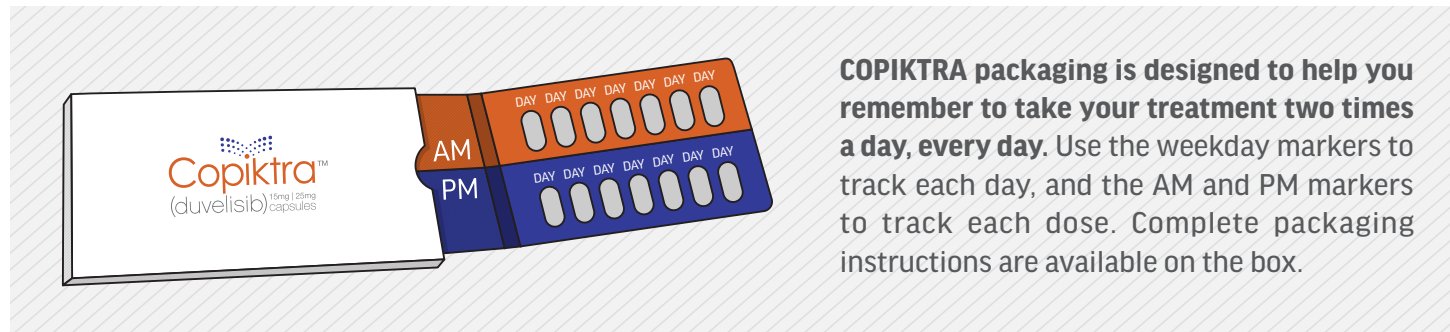
If you take too much COPIKTRA, call your doctor right away or go to the nearest hospital emergency room.

Please see Important Safety Information throughout and read the Medication Guide, which includes information on serious side effects, in the accompanying full Prescribing Information.

TIPS FOR REMEMBERING TO TAKE COPIKTRA

- Record each dose in a treatment journal
- Build a routine and take your medication at the same time each day
- Take your medication before or after an activity that you do everyday, like brushing your teeth
- Set alarms on smartphones or watches
- Have a family member or friend remind you

The COPIKTRA packaging can help you track your treatment.



COPIKTRA packaging is designed to help you remember to take your treatment two times a day, every day. Use the weekday markers to track each day, and the AM and PM markers to track each dose. Complete packaging instructions are available on the box.

HOW SHOULD I STORE COPIKTRA?

- Store COPIKTRA at room temperature between 68°F to 77°F (20°C to 25°C).
- Keep COPIKTRA in its original container until you are ready to take your dose.

Keep COPIKTRA and all medicines out of the reach of children.

Please see Important Safety Information throughout and read the Medication Guide, which includes information on serious side effects, in the accompanying full Prescribing Information.

PATIENT AND CAREGIVER SUPPORT RESOURCES

Secura Care™ Patient Support Program offers help with insurance verification and patient support programs.[†]

[†] Limitations apply. This offer is not valid under Medicare, Medicaid, or any other federal or state program. Secura Bio, Inc. reserves the right to rescind, revoke, or amend this program without notice.

The Patient Support Program includes:



- The Co-Pay Program offers quick and easy access to co-pay assistance for COPIKTRA.
- With the Co-Pay Program, eligible, commercially insured patients pay no more than \$5 per month up to an annual maximum of \$25,000 per calendar year.

Please see Important Safety Information throughout and read the Medication Guide, which includes information on serious side effects, in the accompanying full Prescribing Information.



- Encourage your patients to find out if they are eligible for the Co-Pay Program by calling Secura Care™: 844-9SECURA [(844) 973-2872] Monday to Friday 10:00 AM to 7:00 PM ET



- The Secura Bio Quickstart Program offers the first cycle of drug at no cost to eligible patients who have a delay of 5 days or more in obtaining prior authorization.
- The Patient Assistance Program is available to support low-income and uninsured patients. Please have your patient contact Secura Care™ to understand if they qualify.

To access Secura Care™, please call:

844-9SECURA [(844) 973-2872]
Monday to Friday 10:00 AM to 7:00 PM ET

Or visit our website at:

<https://securabio.com/patient-support-programs>

Please see Important Safety Information throughout and read the Medication Guide, which includes information on serious side effects, in the accompanying full Prescribing Information.

YOU DON'T HAVE TO FACE CANCER ALONE

A community of support stands with you.

Although no one source has all the answers, resources are available to people living with CLL, SLL, and FL, their caregivers, and loved ones. These advocacy groups are dedicated to increasing awareness and education and advancing research. Check out the following websites to discover local support group meetings, fundraising opportunities, and other valuable resources.*

American Cancer Society

cancer.org

The American Cancer Society is a leader in the fight against cancer by providing patient resources and fighting for lifesaving policy changes.

CancerCare

cancercare.org

CancerCare offers free emotional support from professional oncology social workers to people with cancer, caregivers, loved ones, and the bereaved.

CLL Society

CLLsociety.org

This patient-centric, physician-curated nonprofit organization focused on patient education, support, and research is dedicated to helping those living with CLL.

National Cancer Institute

cancer.gov

NCI offers information on cancer types, prevention, treatment, and clinical trials.

Cancer Support Community

cancersupportcommunity.org

This organization provides a free Cancer Support Helpline (1-888-793-9355) for anyone affected by cancer and a variety of other community-building resources.

Leukemia & Lymphoma Society

lls.org

As the world's largest nonprofit organization dedicated to blood cancers, LLS provides the opportunity to join an online community of blood cancer patients, survivors, and caregivers.

National Coalition for Cancer Survivorship

canceradvocacy.org

NCCS offers information on survivorship issues for both patients and caregivers and has toolkits for specific types of lymphoma.

Friends of Cancer Research

focr.org

For more than 20 years, FOCR has driven collaboration among partners in every healthcare sector to advance science, policy, and regulation.

Lymphoma Research Foundation

lymphoma.org

LRF offers resources such as stories of hope, an LRF mobile app, access to webcasts, and teleconferences with lymphoma experts.

Become empowered with information from experts and encouragement from those who share your experience. There's no need to go it alone.

*Secura Bio, Inc. is not endorsing any particular group or service and is not responsible for the content of these sites or services.

HELPFUL TIPS FOR PEOPLE WITH CLL, SLL, OR FL

What you can do for your health.

Living with CLL, SLL, or FL can be unpredictable. How you feel may change from day to day. You're also an individual, so your body will react differently—both to the disease and the treatments your doctor prescribes. However, there are some steps you can take to try to stay healthy. Use these tips as a starting point for discussions with your healthcare team.



Follow Healthy Nutritional Guidelines

Eating healthy is important. To ensure the food you're eating is helpful to your body:

- Talk to your doctor about foods to eat, foods to avoid, portions, and frequency of meals
- Be cautious with raw or uncooked foods
- Stay hydrated
- Avoid strong or overpowering smells that may trigger nausea
- Talk to your doctor if you experience nausea



Try to Avoid Infections and Fever

Low white blood cell counts can increase your risk of infection and fever. To reduce your risk:

- Remind people around you to wash their hands frequently
- Take precautions to minimize your exposure to bacteria and viruses



Rest when Needed

Getting rest is very important to your overall health. To make sure you're getting enough rest:

- Talk with your doctor if you are experiencing tiredness or fatigue and ask how to improve your sleep quality, if needed
- Avoid drinking caffeine or alcohol right before you go to sleep; do something that will relax you instead
- Try to have a consistent bedtime and avoid long naps during the day
- Talk to your doctor about how to add appropriate exercise into your routine

Physical activity may decrease feelings of fatigue and encourage healthy sleep patterns

Always remember to talk with your doctor about how you are feeling during treatment. It is important that they know how your treatment is affecting you so that adjustments can be made if needed.

“IS COPIKTRA RIGHT FOR ME?”

Talking to your doctor about COPIKTRA



Making the most of your doctor appointments is always important—especially if you’re considering COPIKTRA as a treatment option or just want to learn more about it.

You might want to write down a list of questions before your appointment. You can also bring a family member or friend for support—and to help you keep track of the answers. If you need help organizing your thoughts or starting the conversation with your doctor, consider the questions on the next few pages to plan your next appointment.

QUESTIONS FOR YOUR DOCTOR

What are some of my treatment options?

How do we determine which treatment options are right for me?

Is COPIKTRA right for me? Why or why not?

How may COPIKTRA help with my CLL/SLL/FL?

What are the possible side effects with COPIKTRA?

Please see Important Safety Information throughout and read the Medication Guide, which includes information on serious side effects, in the accompanying full Prescribing Information.

(see back for more)

How does COPIKTRA work?

How will I know if COPIKTRA is working for me?

How should I take COPIKTRA, and how often should I take it?

Is there financial assistance to help me pay for COPIKTRA?

Do you know of any CLL/SLL or FL support groups in my area?

(If no local groups) Can you help me find some online resources and support groups?

NOTES

NOTES

IMPORTANT SAFETY INFORMATION

COPIKTRA can cause serious side effects, including:

- **Infections.** Infections are common during COPIKTRA treatment and can be serious and can lead to death. Tell your healthcare provider right away if you have a fever, chills, or other signs of an infection during treatment with COPIKTRA.
- **Diarrhea or inflammation of your intestine.** Diarrhea or inflammation of your intestine (colitis) is common during COPIKTRA treatment and can be serious and can lead to death. Your healthcare provider may prescribe an anti-diarrhea medicine for your diarrhea. Tell your healthcare provider right away if you have any new or worsening diarrhea, stool with mucus or blood, or if you have severe stomach-area (abdominal) pain. Your healthcare provider should prescribe medicine to help your diarrhea and check you at least weekly. If your diarrhea is severe or anti-diarrhea medicines did not work, you may need treatment with a steroid medicine.

- **Skin reactions.** Rashes are common with COPIKTRA treatment. COPIKTRA can cause rashes and other skin reactions that can be serious and can lead to death. Tell your healthcare provider right away if you get a new or worsening skin rash, or other skin reactions during treatment with COPIKTRA, including:
 - painful sores or ulcers on your skin, lips, or in your mouth
 - severe rash with blisters or peeling skin
 - rash with itching
 - rash with feverYour healthcare provider may need to prescribe medicines, including a steroid medicine, to help treat your skin rash or other skin reactions.
- **Inflammation of the lungs.** COPIKTRA can cause inflammation of your lungs which can be serious and can lead to death. Tell your healthcare provider right away if you get new or worsening cough or difficulty breathing.

IMPORTANT SAFETY INFORMATION

Your healthcare provider may do tests to check your lungs if you have breathing problems during treatment with COPIKTRA. Your healthcare provider may treat you with a steroid medicine if you develop inflammation of the lungs that is not due to an infection.

If you have any of the above serious side effects during treatment with COPIKTRA, your healthcare provider may stop your treatment for a period of time, change your dose of COPIKTRA, or completely stop your treatment with COPIKTRA.

COPIKTRA may cause other serious side effects, including:

Elevated liver enzymes. COPIKTRA may cause abnormalities in liver blood tests. Your healthcare provider should do blood tests during your treatment with COPIKTRA to check for liver problems. Tell your healthcare provider right away if you get any symptoms of liver problems, including yellowing of your skin or the white part of your eyes (jaundice), pain in the abdominal region, bruising or bleeding more easily than normal.

Low white blood cell count (neutropenia). Neutropenia is common with COPIKTRA treatment and can sometimes be serious. Your healthcare provider should check your blood counts regularly during treatment with COPIKTRA. Tell your healthcare provider right away if you have a fever or any signs of infection during treatment with COPIKTRA.

Common side effects of COPIKTRA include:

- tiredness
- upper respiratory infection
- fever
- bone and muscle pain
- cough
- low red blood cell count
- nausea

These are not all the possible side effects of COPIKTRA. Call your doctor for medical advice about side effects. You may report side effects to FDA at 1-800-FDA-1088 and to Secura Bio, Inc. at 1-844-973-2872.

Before taking COPIKTRA, tell your healthcare provider about all of your medical conditions, including if you:

- have intestinal problems
- have lung or breathing problems
- have an infection
- are pregnant or plan to become pregnant. COPIKTRA can harm your unborn baby.
 - Your healthcare provider should do a pregnancy test to see if you are pregnant before you start treatment with COPIKTRA.
 - **Females** who are able to become pregnant should use effective birth control (contraception) during treatment with COPIKTRA and for at least 1 month after the last dose of COPIKTRA. Talk to your healthcare provider about birth control methods that may be right for you. Tell your healthcare provider right away if you become pregnant or think you are pregnant during treatment with COPIKTRA.

- **Males** with female partners who are able to become pregnant should use effective birth control (contraception) during treatment with COPIKTRA and for at least 1 month after the last dose of COPIKTRA.
- are breastfeeding or plan to breastfeed. It is not known if COPIKTRA passes into breast milk. Do not breastfeed during treatment and for at least 1 month after the last dose of COPIKTRA.

Tell your healthcare provider about all the medicines you take, including prescription and over-the-counter medicines, vitamins, and herbal supplements. COPIKTRA and certain other medicines may affect each other.

Please read the Medication Guide, which includes information about serious side effects, in the accompanying full Prescribing Information.



Secura Bio, Inc.
1995 Village Center Circle, Suite 128
Las Vegas, NV 89134

© 2020 Secura Bio, Inc.

11/20

USCPR2007801

The logo for Copiktra (duvelisib) features a blue molecular structure icon above the word "Copiktra™" in a large, orange, sans-serif font. Below "Copiktra" is the word "(duvelisib)" in a smaller, grey, sans-serif font.

Copiktra™
(duvelisib)